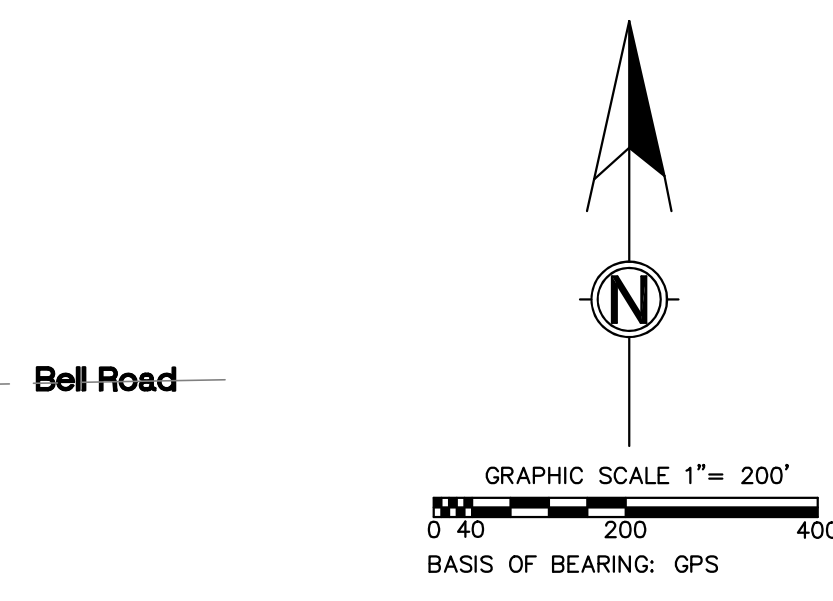


VICINITY MAP (N.T.S.)

PROPOSED ZONING
R-1 SINGLE FAMILY
NOTE: FRONT SETBACK FOR R-1 SINGLE FAMILY IS 35'



PRELIMINARY SUBDIVISION PLAT
HUNTERS POINT SUBDIVISION
LYING IN THE FRACTIONAL SE1/4 OF SECTION 34 AND
THE FRACTIONAL SW1/4 OF SECTION 35, T-8-N, R-8-E
CRITTENDEN COUNTY, ARKANSAS
AUGUST - 2020
146.62 ACRES

T-8-N, R-8-E
T-7-N, R-8-E

SCALE: 1" = 200'
DATE: July - 2020
SHEET OF 1

HUNTERS POINT
PRELIMINARY SUBDIVISION PLAT

PUGH PARTNERSHIP, LLC

Bond Consulting Engineers
3683 STATE HIGHWAY 77 NORTH • (870) 739-2228 • MARION, ARKANSAS 72364
Fax: (870) 739-8407 • E-mail: [bondingengineering@hotmail.com](mailto: bondingengineering@hotmail.com)
Civil Engineers and Land Surveyors

DRAWN BY: BHS
CHECKED BY: JCB
FILE: overall200.dwg
REVISED: